

OCEAN VIEW DRIVE WALKWAY PROJECT

Need: Anyone who has walked along Ocean View Drive between Highway 101 and Beach Street is aware that this is a hazardous zone for pedestrians – there have been reports of people having to jump into the blackberries or teetering on the edge of the narrow gravel strip as vehicles pass by on the road. Pedestrians continuing south towards the Yachats River are often forced to walk out into the street to get around cars parked at the intersection of Highway 101 and Ocean View Drive. This stretch is also a part of both the 804 and Oregon Coast Trails.

Solution: A team made up of all-volunteer Yachats Trail Committee leaders, a volunteer landscape design architect, our former Community Services Coordinator and Rick McClung of Public Works has been working on a design for a project that will remedy this situation by creating a new walking path. As well as creating a safe surface on which to walk, the project will also offer an aesthetically appealing experience of the estuary and ocean for both residents and visitors.

Design: The design calls for an 8-foot-wide walkway south of the current paved surface between Highway 101 and Beach Street, with a Bay Overlook area that will invite folks to linger and enjoy the magnificent views. The wheelchair-friendly walkway will be either a wooden boardwalk or a stacked rock wall backfilled with gravel (see below for diagrams showing the two options). The choice between the walled or decked version will depend not only the cost of materials and labor but also on which proves better in providing structural integrity, meeting the requirements of several state agencies, and minimizing ongoing maintenance.

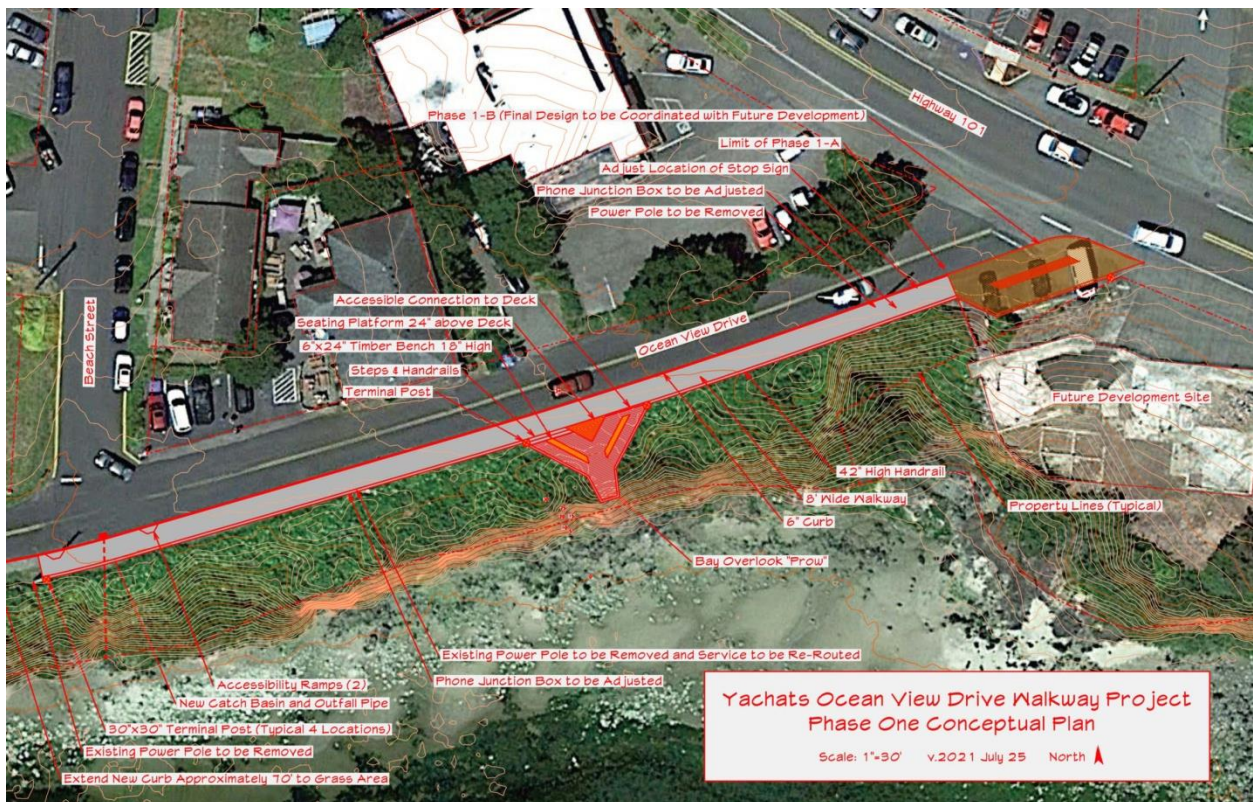
Status: The City Council has voted to approve the conceptual design and to authorize City staff to request bids for engineering. It has also approved splitting the project into two parts: Part A, from Beach Street east to a point 15' east of the stop sign on Ocean View Drive; and Part B, from the aforementioned point east to the ODOT right-of-way for Highway 101. The reason for splitting the project into two parts is that, while Part A is ready to be engineered and built, the design for Part B will be dependent upon several factors that will take more time to determine: the fate of parking spaces at the east end of Ocean View Drive, the design of the Farmstand which is to be built at the old Landmark site, and the possibility of extending the sidewalk on the west side of Highway 101 south from its current terminus.

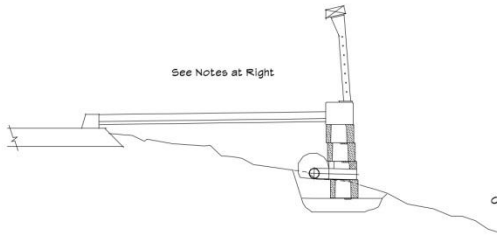
Cost: Cost for this project will not be known until the engineering is completed. Thanks to the efforts of a generous landscape design architect, a professional conceptual design has been completed at no cost to the City, saving a considerable amount.

Funding: Funding sources will include 804 Trail Mitigation Funds, Visitor Amenity Funds (as part of OCT, this project fits the criteria for VAF), grants (the Oregon Coast Visitor's Association has expressed serious interest), and donations (View the Future 501c(3) is collecting donations for this project now).

Timetable: Estimates for engineering bids are currently being requested. Once engineering has been completed, the design can be finalized, and costs can be nailed down. At that point funding will be secured, which may take a year or more.

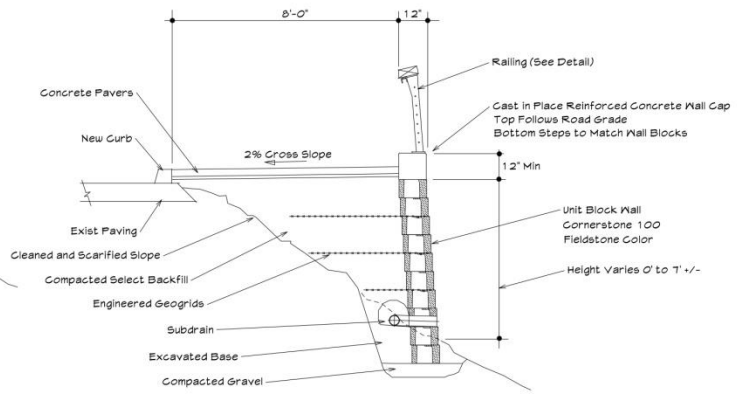
Please address questions and/or comments to yachatstrails@gmail.com





Block Wall Section Where Short

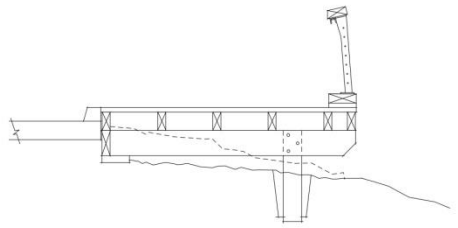
Scale: 3/8" = 1'-0"



Block Wall Section Where Tall

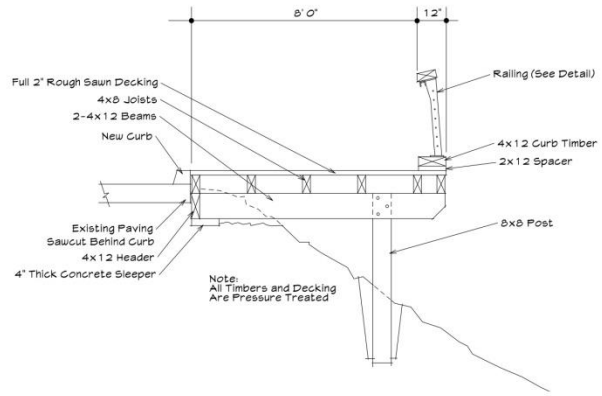
Scale: 3/8" = 1'-0"

Block Wall Option



Wood Deck Section Where Short

Scale: 3/8" = 1'-0"



Wood Deck Section Where Tall

Scale: 3/8" = 1'-0"

Wood Deck Option